



PRE-SCHOOL	Construction	2 Months
Wellesley Pre-school	Partners	Williams-Scotsman Baltimore, MD
Wellesley, Massachusetts	Specs	HMFH Architects Cambridge, MA
Wellesley is an affluent community near Boston that is very concerned about aesthetics, urban planning, and quality of life issues. Their school system has a reputation throughout the state for fostering academic excellence and creativity.		9,000 Square Feet Extensive Ceramics Concrete Sub-floors

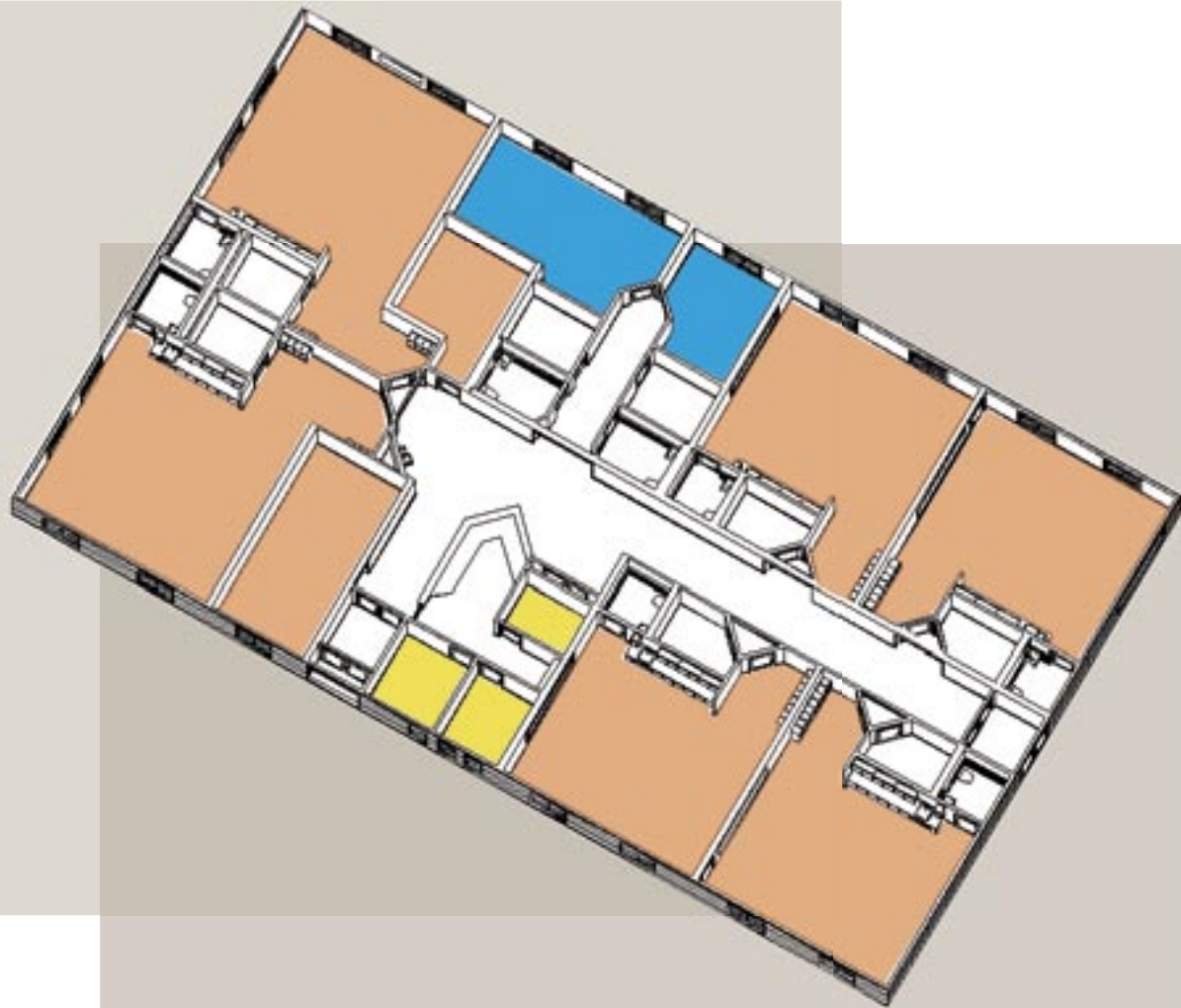
CASE STUDIES · EDUCATION



"The modular process helped control our timelines and was easy to design with."
-John Nunnari HMFH Architects (AIA)



Office	Class	Special Needs
--------	-------	---------------



THEIR NEED

The Wellesley public school corporation decided that they needed to establish a separate building for the community pre-school. The site available, however, presented a number of challenges, including traffic, drainage concerns, and neighbors who were skeptical of the project. Whitley combined with Williams-Scotsman and HMFH Architects to design and build a structure that solved all of these problems. The facility would need to be ready for spring classes and would have to be permanent and unique.

OUR SOLUTION

Whitley and Williams-Scotsman worked closely with the school board to design a building that dampened noise, resolved area drainage problems, and fit architecturally into the surrounding community. They turned to Whitley to construct the 9,000 square foot building which included classrooms, offices, restrooms, and open common areas.

The interior was designed and decorated with young children in mind. Built with ceramic bathrooms throughout and concrete floors, the building has a substantial and permanent feel. Whitley began construction while the final planning phases occurred in early August. *By late September, the construction was completed and the final finishing was done in time for children to attend fall classes.*



260.723.5131

www.whitleyman.com

• South Whitley, IN • Rochester, IN • Marysville, WA •