



CASE STUDY

Pierce County, Washington, had acquired a large parcel bordering the Puget Sound in 1992. Over time, plans emerged for a 900 acre links-style golf course overlooking Chambers Bay. The criteria included: space for gatherings, office space, eating and kitchen areas for members. It would need to fit its natural surroundings. It will only be temporary and need to make way for a larger, permanent structure as the community grew. And, it needed to be built fast.

KEY ACHIEVEMENTS

85% of construction was finished off-site

Saved man hours and excessive building material waste

Designed to relocate for future re-purposing

Accelerated production process reduced project time line by %25

Reduced needed materials and labor on-site

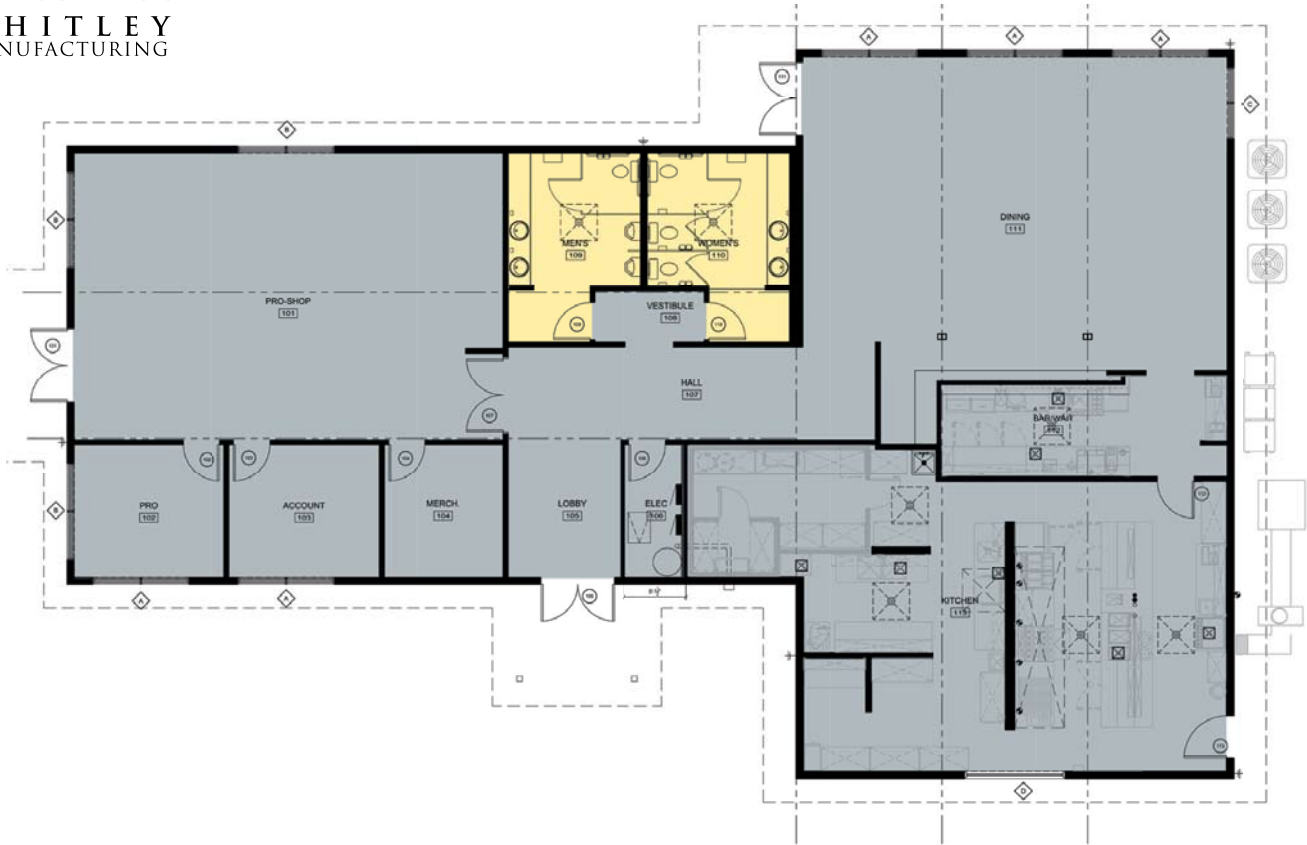
On Budget and on Time

Chambers Bay Modular Clubhouse

Concurrent construction was used to maximum effect in this case. Construction began while foundations were being installed and permits finalized. This allowed a quick delivery. Unique features included the installed truss roof system and unique siding. The interior finish featured a golden vertical grain fir continuing from the Pro Shop through the bar and restaurant. The modular design gave the flexibility to easily disassemble and relocate whenever the customer plans to move and re-purpose the structure at a later date.



Chambers Bay Modular Clubhouse



KEY FACTS

PROJECT NAME
CHAMBERS BAY CLUBHOUSE

LOCATION
CHAMBERS BAY, WA

PARTNERS
WILLIAMS SCOTSMAN
RICHARD GLASSMAN, ARCHITECT

PROJECT TYPE
TEMPORARY STRUCTURE,
CLUBHOUSE

BUILDING SIZE
4,320 SQ. FT.

BUILDING UNITS
6 MODULES



Serving you nationwide from South Whitley, IN (260) 723-5131 • Rochester, IN (574) 223-4934 • Marysville, WA (360) 653-5790
& Leola, PA (717) 656-2081 • Visit us online at www.whitleyman.com