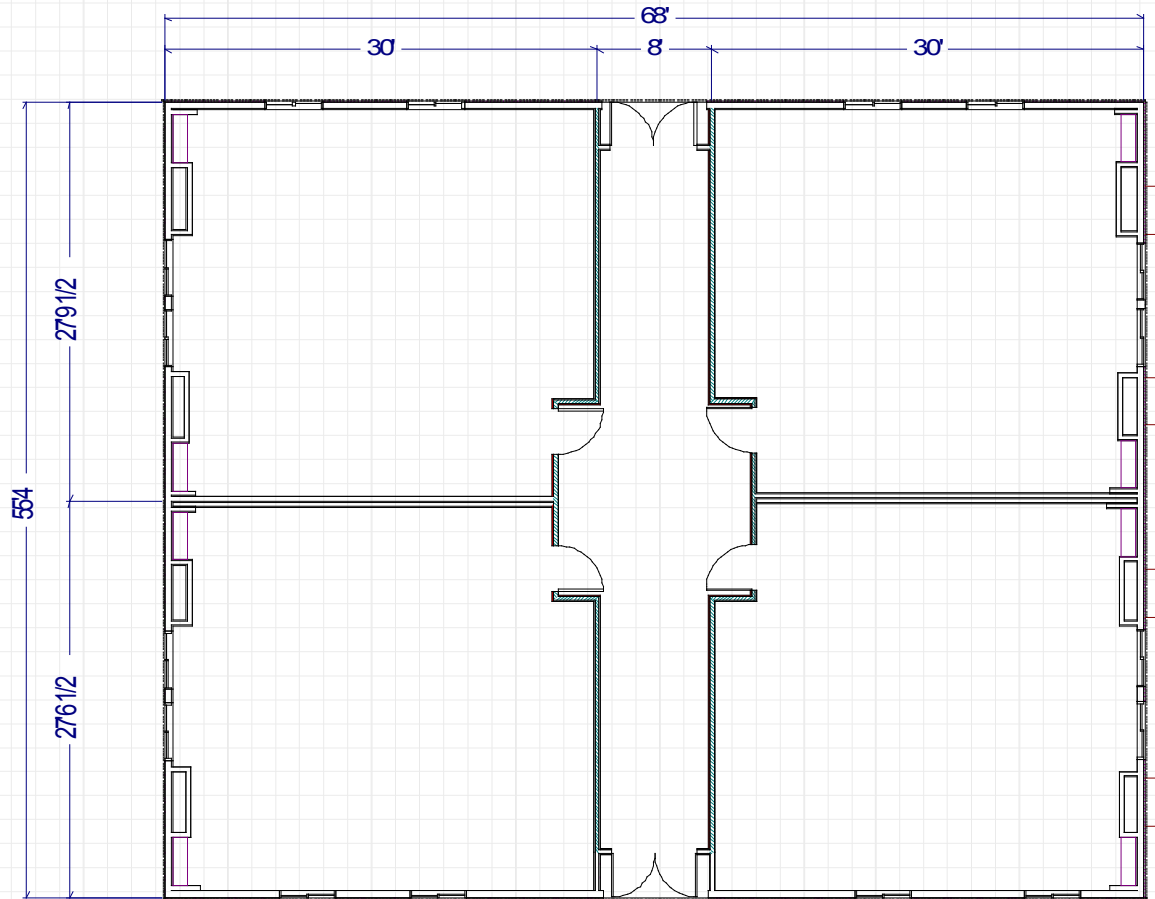


# A R I S T O T L E 4 • C L A S S

W H I T L E Y M A N U F A C T U R I N G



CLASSROOMS

**4**

RESTROOMS

**0**

site provided

EXT. DIMENSION

*nominal*

**56 x 68**

STUDENT LOAD

*appx.*

**100**

SQ. FOOTAGE

*appx.*

**3,672**



## BUILDINGS FOR EDUCATION

BY WHITLEY MANUFACTURING

- Relocatable Classroom Buildings
- School Expansions
- Custom, Permanent Schools
- Press Boxes
- Shower & Locker Buildings / Restrooms
- Concessions Facilities



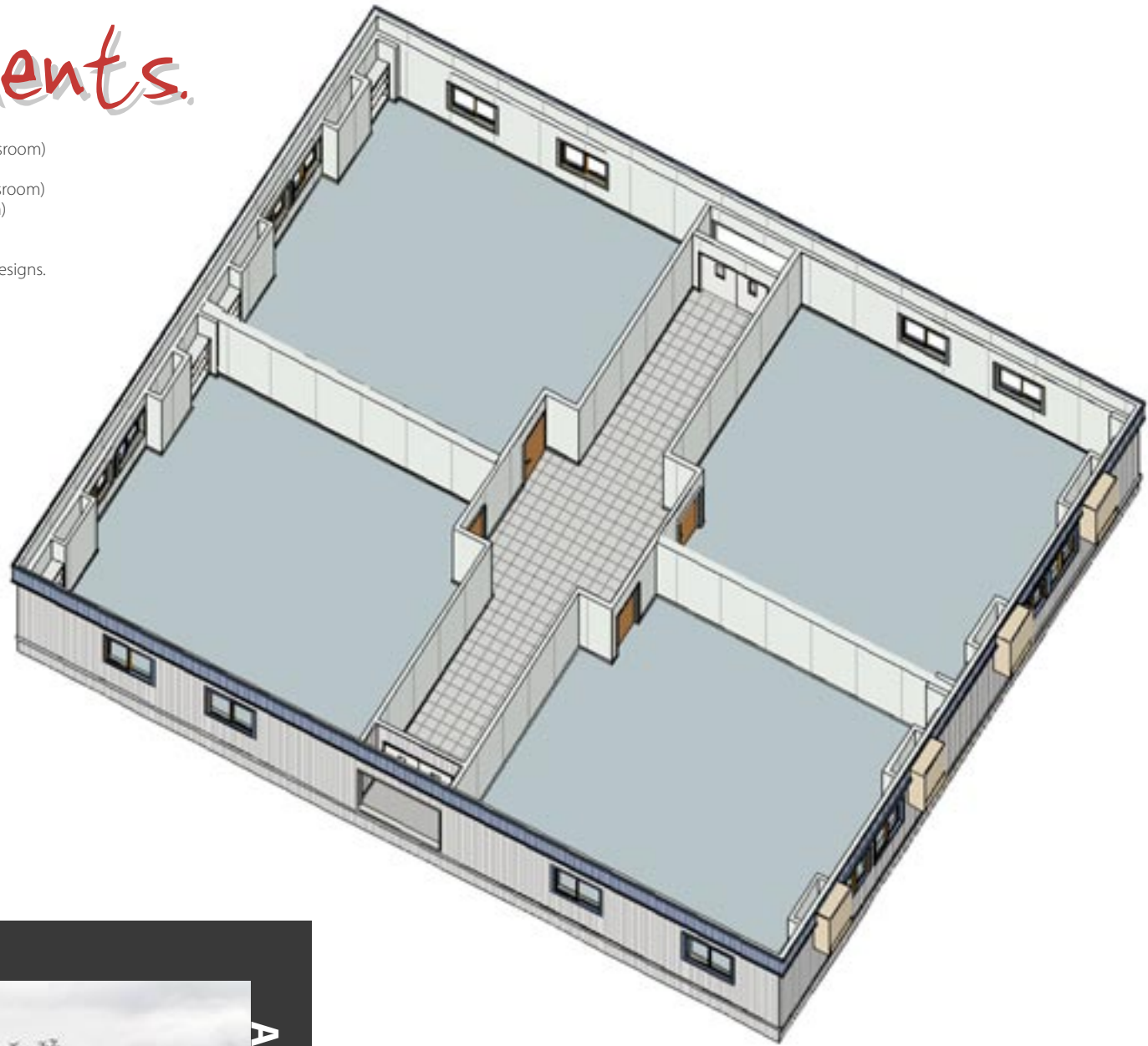
[www.whitleyman.com](http://www.whitleyman.com)

# Just add students.

*Whitley Manufacturing's line of classroom systems are designed to provide flexible space to educators.*

*Our building system can deliver structures of the utmost quality in a fraction of the time. The process is designed with ease in mind. Choose your plan and specifications...then just add students!*

- Socrates (2-classroom)
- Socrates + (larger 2-classroom)
- Aristotle (4-classroom)
- Aristotle + (larger 4-classroom)
- Pythagoras (6-classroom)
- Plato (8-classroom)
- Cicero (12 classroom)
- Contact us for custom designs.



**(4) CLASSROOMS**



**ARISTOTLE**

**Whitley Mfg. Co. Inc.**

- South Whitley, Indiana
- Rochester, Indiana
- Marysville, Washington

**(260) 723-5131**

[www.whitleyman.com](http://www.whitleyman.com)