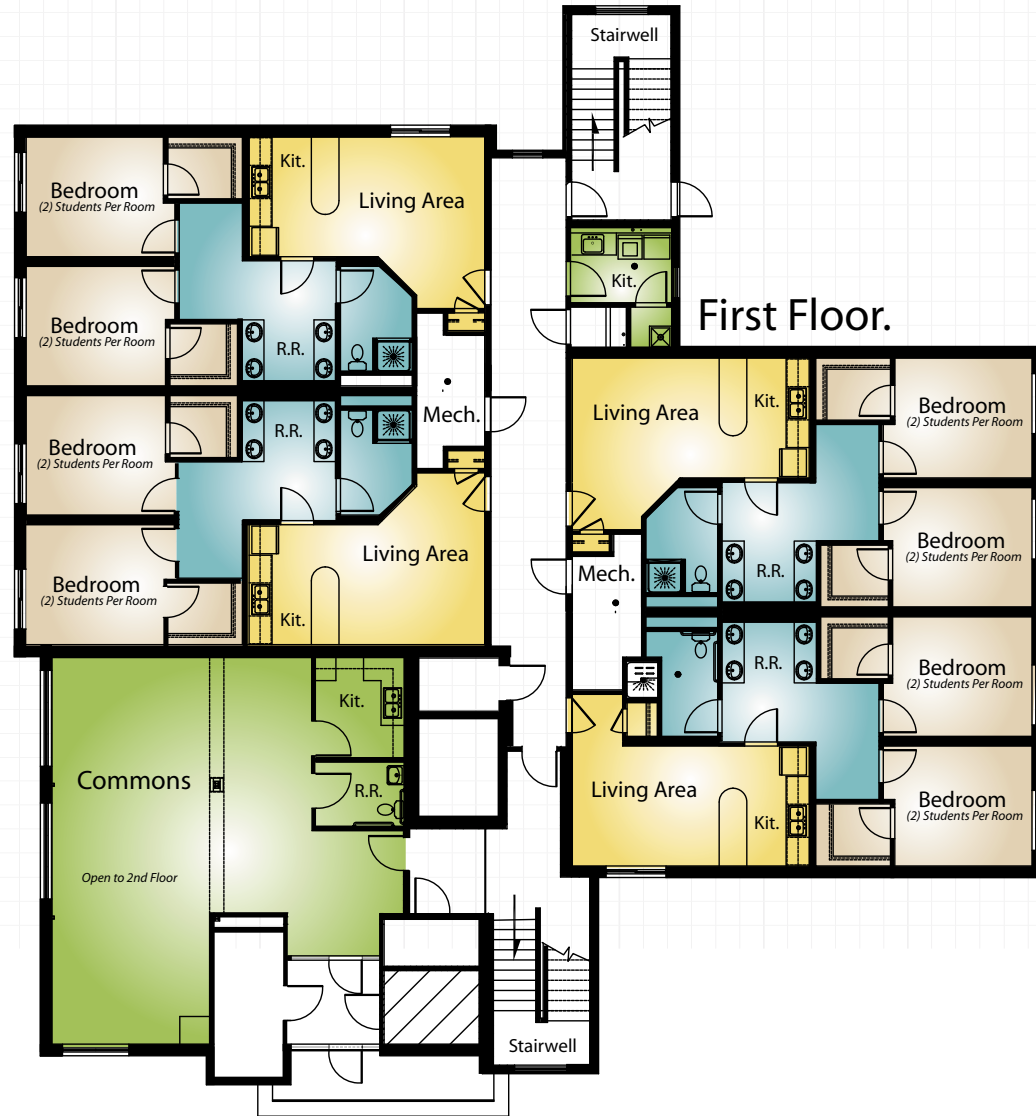


# EVANS-KIMMELL HALL INDIANA TECH UNIVERSITY (FORT WAYNE, IN)



**Whitley Mfg. Co., Inc.**  
 South Whitley, IN // Rochester, IN  
 Marysville, WA  
 (260) 723-5131  
[www.whitleyman.com](http://www.whitleyman.com)

STUDENTS

**64**

RESTROOMS

*ADA-compliant*

**16**

EXTERIOR

**4-story**

USE

**dormitory**

SQ. FOOTAGE

*appx.*

**21,000**



**BUILDINGS FOR EDUCATION**

BY WHITLEY MANUFACTURING  
[www.whitleyman.com](http://www.whitleyman.com)





**Whitley Mfg. Co., Inc.**

South Whitley, IN // Rochester, IN

Marysville, WA

(260) 723-5131

[www.whitleyman.com](http://www.whitleyman.com)

# 2ND STORY



Second Floor.



# 3RD STORY



Third Floor.



**Whitley Mfg. Co., Inc.**  
South Whitley, IN // Rochester, IN  
Marysville, WA  
(260) 723-5131  
[www.whitleyman.com](http://www.whitleyman.com)

# 4TH STORY

## Fourth Floor.



**WM**  
**Whitley Mfg. Co., Inc.**  
South Whitley, IN // Rochester, IN  
Marysville, WA  
(260) 723-5131  
[www.whitleyman.com](http://www.whitleyman.com)