

# ROGERS-YERGENS HALL INDIANA TECH UNIVERSITY (FORT WAYNE, IN)

WHITLEY MANUFACTURING



**FIRST FLOOR**



**Whitley Mfg. Co., Inc.**  
 South Whitley, IN // Rochester, IN  
 Marysville, WA  
 (260) 723-5131  
[www.whitleyman.com](http://www.whitleyman.com)

STUDENTS

**45**

RESTROOMS

*ADA-compliant*

**24**

EXTERIOR

**3-story**

USE

**dormitory**

SQ. FOOTAGE

*appx.*

**18,000**



**BUILDINGS FOR EDUCATION**

BY WHITLEY MANUFACTURING  
[www.whitleyman.com](http://www.whitleyman.com)





Whitley Mfg. Co., Inc.

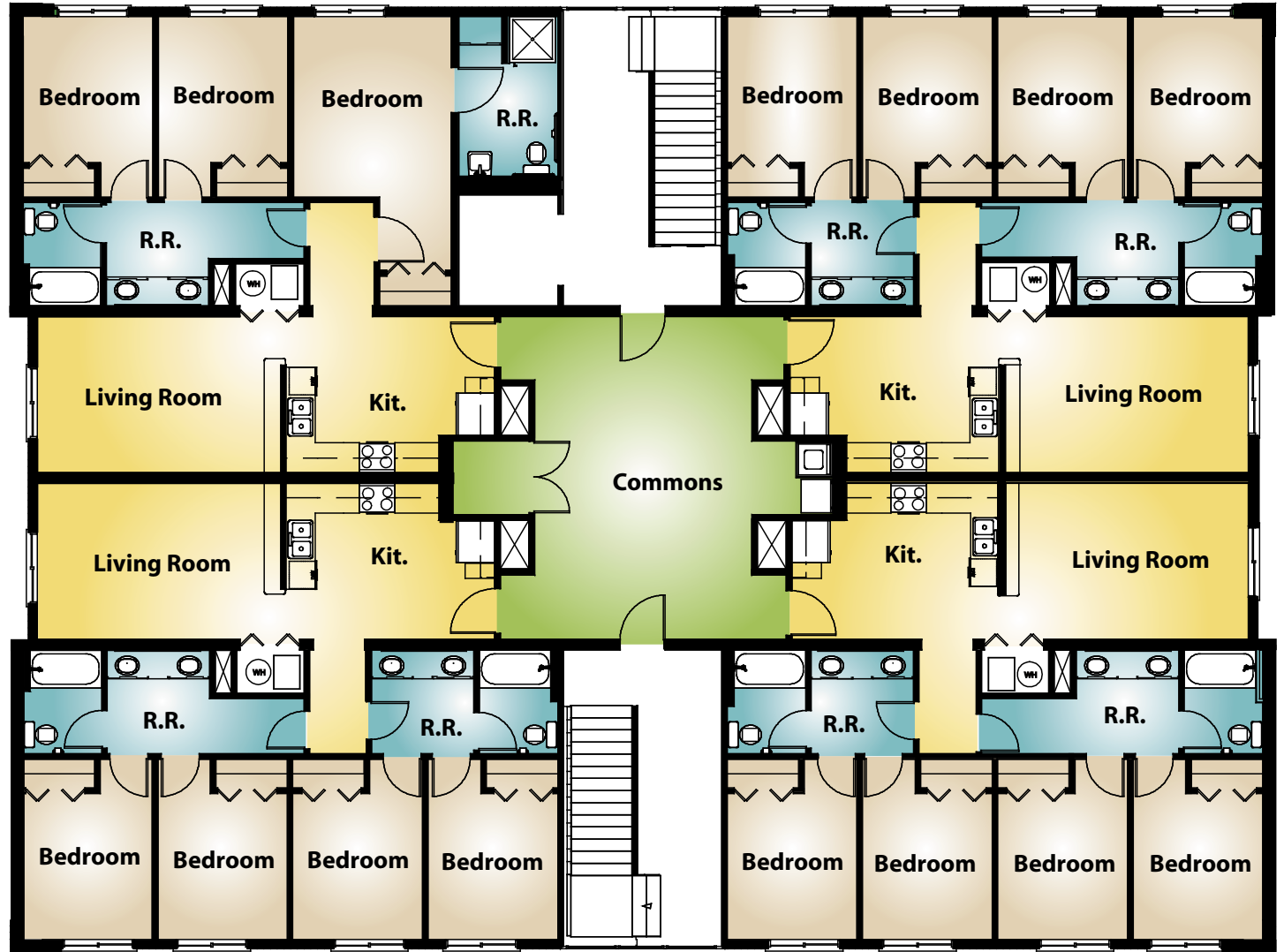
South Whitley, IN // Rochester, IN

Marysville, WA

(260) 723-5131

[www.whitleyman.com](http://www.whitleyman.com)

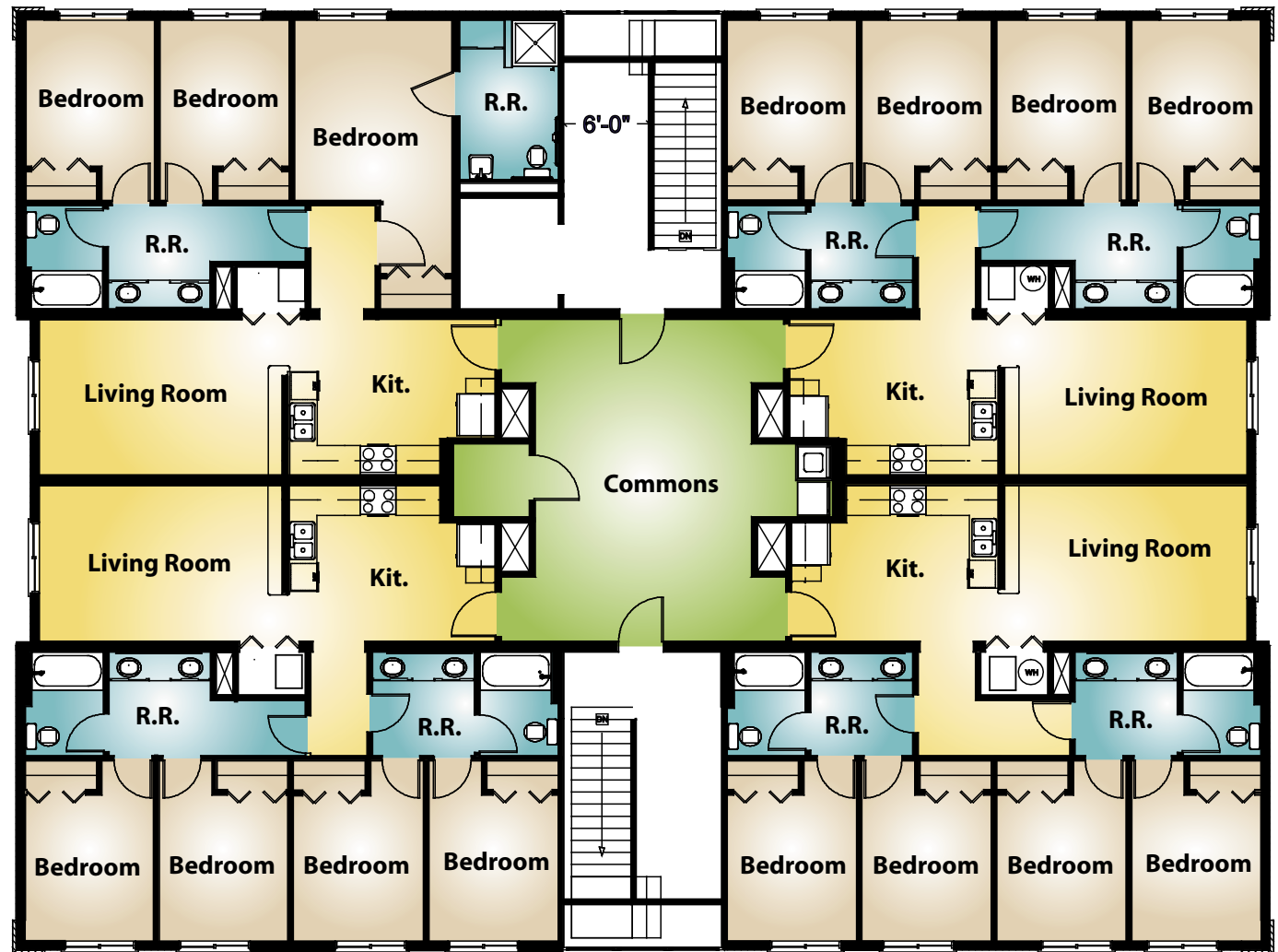
# 2ND STORY



**SECOND FLOOR**



# 3RD STORY



THIRD FLOOR



**Whitley Mfg. Co., Inc.**

South Whitley, IN // Rochester, IN  
Marysville, WA

(260) 723-5131

[www.whitleyman.com](http://www.whitleyman.com)