

W H I T L E Y M A N U F A C T U R I N G

# medical construction

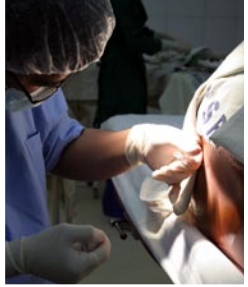


# M E D I C A L   C O N S T R U C T I O N

Medicine is a field that is known for rapid changes. New and improved drugs appear, research validates (or disproves) methods of treatment, and technology changes at a rapid pace. The market is also marked by competition. Even within an HMO, there is a choice for most patients. If technology is not available, they will go elsewhere. A newly constructed clinic is sure to attract patients.

It is imperative for hospitals and physicians both to be able to react quickly to these changes. In addition, a degree of flexibility is required. As demographics change, quick expansions or relocations may be necessary.

The hospital or doctor that cannot react quickly may find their practice going the way of house calls.



# BLDG. TYPES



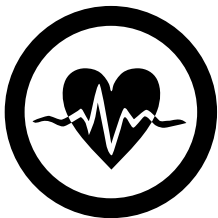
## **MEDICAL CLINICS & OFFICES**

*Clinic Space for Single or Multiple Practitioners  
• Medical Office Space or Expansions to Existing  
Office Facilities •*



## **DENTAL CLINICS & OFFICES**

*Clinic Space for Single or Multiple Practitioners  
• Offices for Dental Specialties (Orthodontics •  
Oral Surgery • Etc.) •*



## **HOSPITAL & EXPANSION**

*General Hospital Space • Surgery Centers •  
Hospital Offices • Emergency Care • Lab and  
X-ray Facilities • Expansions to Existing Hospital  
Buildings •*



## **DIALYSIS**

*Full Service Dialysis Treatment / Clinic Space •*



## **MRI & IMAGING**

*Shielded MRI Facilities • Scanning & Imaging  
Buildings • X-Ray •*



## **NEW TECHNOLOGY**

*Radiosurgery • Proton Therapy •*



## SIDE EFFECTS OF SITE CONSTRUCTION.



**May cause unexpected delays.**

*With the construction site exposed to the elements, weather and vandalism or theft can delay projects. The (un)availability of specialized sub-contractors also delays buildings.*



**DO NOT write your budget in pen.**

*Get ready for overruns. Weather delays, material price increases, subcontractors - they all cost money and can jeopardize the cost estimate of the building.*



**Frustration may occur. Alcohol may intensify this effect.**

*In a society that thrives on speed, the slow pace of site construction is enough to frustrate anyone. There is also the aggravation of long-term disruption to the building site due to construction and traffic.*



**Construction should be undertaken with plenty of excess time.**

*Site projects feature long construction timelines, are vulnerable to weather, and rely on a good deal of subcontracted labor. These variables are not ideal for the client with a deadline.*



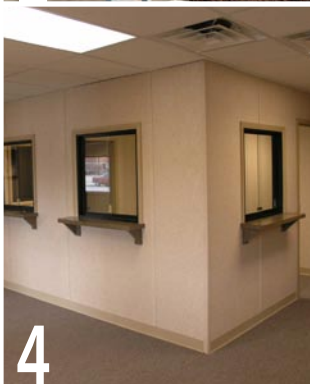
## MODULAR TREATMENTS.

*Modular buildings are constructed off-site and indoors to eliminate weather delays and remain safe from material theft and vandalism.*

*With volume purchasing and an efficient, controlled environment, modular construction can help to limit cost overruns during the project.*

*Off-site construction minimizes the disruption to your site. The foundation and structure can be built at the same time, leading to significant time savings.*

*When a timetable is involved, modular construction is at a distinct advantage. By reducing the building time for a project, the return-on-investment is maximized.*



1

*Dialysis Treatment Facility*

2

*Medical Clinic*

3

*Hospital Expansion*

4

*Dental Clinic*

5

*MRI Facility*

6

*Medical Office Building*





Whitley Manufacturing Co. Inc.  
201 W. First St. • South Whitley, IN • 46787  
Phone • (260) 723-5131 • Fax • (260) 723-6949  
[www.whitleyman.com](http://www.whitleyman.com)